



### Highlights

- Full support for testing Ada 83 and Ada 95
- Host and Target
- Wizard driven scripting
- Automated checks
- Stubbing
- Exception checking
- Timing analysis
- Automated Regression Testing
- Integrated Coverage Analysis
- Integrated static analysis
- Developed under the control of IPL's Quality Management System which is accredited to ISO 9000-3 (TickIT)



Certificate Number F0018288

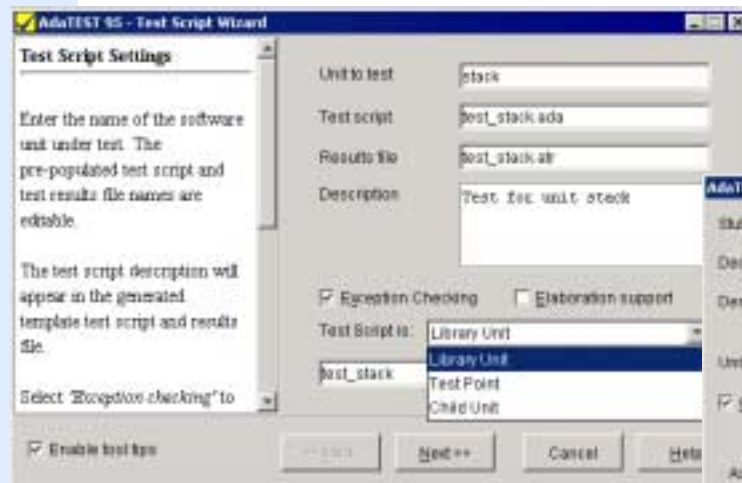
### The Only Ada Testing Tool You Need

IPL's AdaTEST toolset has been at the forefront of Ada code verification since its introduction in 1991. Its use has featured in many high profile projects ranging from air-traffic control, avionics, rail transport, space, defense, nuclear energy, and even financial and digital broadcast systems. The common factor in all of these areas is the imperative to produce software which reliably "does what it should do", in a cost-effective manner.

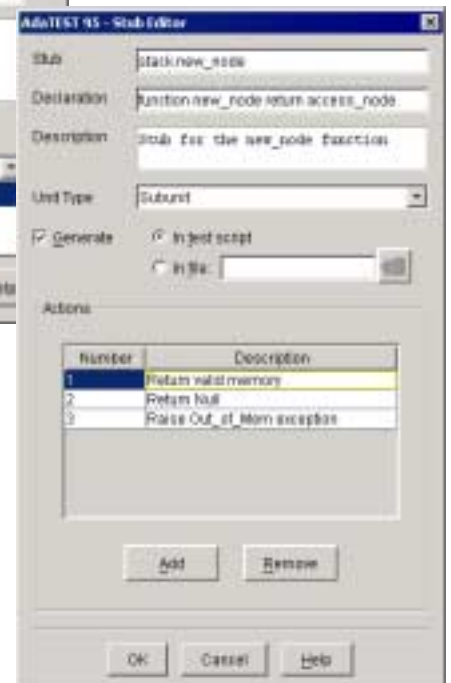
### Dynamic Testing Features

Dynamic testing actively demonstrates whether user code performs to its specification.

- Uses your compiler's IDE to build and execute tests, minimizing the product's learning curve.
- Wizard driven Test Script generation including on-line help and step-by-step facilities for creating a test driver environment.
- White Box and Black Box testing techniques are supported.
- Intuitive Test Directives for quickly developing structured repeatable tests and generating clear unambiguous results.
- Automated Checks for all standard Ada 95 data types, and generic Checks for instantiation with user-defined types.
- Exception verification to check both the occurrence of expected exceptions and the non-occurrence of unexpected exceptions.
- Stubbing to create programmable versions of external ("separate") sub-units, and perform call sequence validation.
- Real-Time Performance Analysis checks execution times for specified blocks of code.
- Cross-Platform Execution of tests without modification from native host machine to embedded target.
- Automated Regression Testing for re-running tests in batch mode.



The Test Script Wizard accelerates the testing process.



Distributed by:

Quality Checked Software  
PO Box 6656  
Beaverton, OR 97007-0656

Telephone: (503) 645-5610  
Email: info@qcsLtd.com  
Web: www.qcsLtd.com

*"It's easy to be positive when working with such a superior tool as AdaTEST 95. I've worked with a few testing tools in my time, both commercial and free, and yours is by far the best."*

ConsultIT/Kongsberg

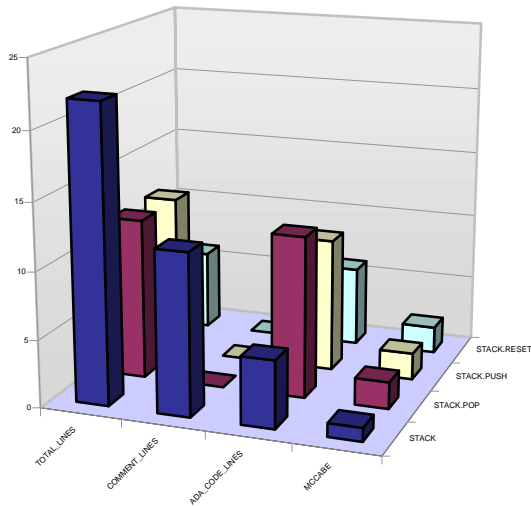


### Static Analysis

Static analysis generates over 100 metrics on Ada source code. Simple RuleSets can be used to help enforce 'code quality' standards such as restrictions on the use of specific code constructs and in defining limits on complexity metrics.

**Basic Metrics** include code lines, comments, number of Ada units, and counts of most code constructs defined by the Ada Language Reference Manual (LRM).

- **Complexity metrics**, such as McCabe, Halstead, and many others.
- **Metrics Checks** integrated into dynamic tests result in Pass/Fail/Warnings or run standalone.
- **Metrics Reports** can be produced in text and .csv formats. The latter can be imported into spreadsheets for further graphical and numerical analysis.



MS Excel Graphic generated by AdaTEST 95 Static Analysis

*"I would like to thank you for being about the easiest and most professional company to deal with. Rest assured I will sing IPL's praises at every opportunity." Thales ATM*

### Further Information

IPL's testing tools support the unit/class/module and integration testing on a wide range of C (ANSI and ISO C99), C++, EC++, ETC++ (*Cantata++*) and Ada (*AdaTEST 95*) high integrity and business critical development projects. Further information and detailed product presentations are available from the IPL website or contact your local supplier.

### Coverage Analysis

Coverage analysis provides objective measurement of how effective the dynamic tests have been in executing the code. Code coverage requirements can be defined in RuleSets:

- **Code Coverage Metrics**
  - Entry points
  - Statements
  - Decisions (branches)
  - Conditions (Booleans)
  - MC/DC (DO-178B)
  - Exceptions
- **Data Value** coverage of specified variable values – 'always true' or 'true at least once'.
- **Check Path and Trace** to ascertain detailed path execution through code.
- **Coverage Checks** are integrated into dynamic tests resulting in Pass/Fail/Warnings.
- **Coverage Statistics** can be produced both as text file and HTML highlighted views of source code.

## AdaTEST 95

### Supported Platforms

AdaTEST 95 is available for all validated Ada 95 compiler environments in native host and embedded target platforms.

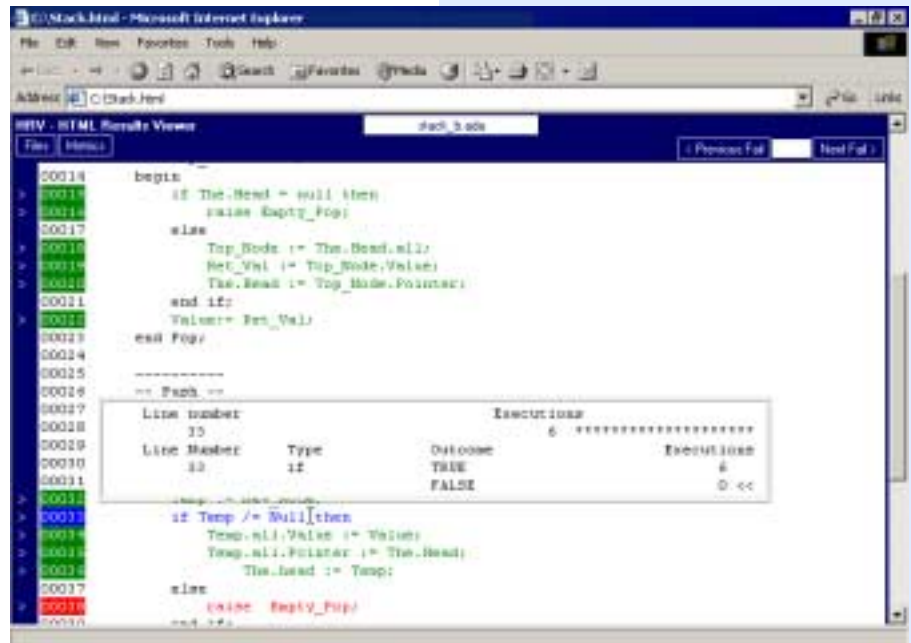
### Native Development Platforms

Windows 9x, NT, 2000, XP  
 Solaris  
 HP-UX  
 Linux  
 AIX  
 SGI IRIX  
 Compaq Tru64 Unix

### Cross Development Platforms

GreenHills AdaMULTI  
 Anix Object Ada Realtime  
 GNAT  
 XGC  
 OCS Power Ada  
 DDC-I  
 Rational Apex

More cross-compilers are constantly being added to our list of supported platforms. See our website for the most up-to-date list of supported environments.



Screenshot from AdaTEST 95 HTML results viewer.

North American Distributor:  
**Quality Checked Software**  
 PO Box 6656  
 Beaverton, OR 97007-0656

Telephone : (503) 645-5610  
 Email : [info@qcsltd.com](mailto:info@qcsltd.com)  
 Web : [www.qcsltd.com](http://www.qcsltd.com)

Software Products Group  
 IPL  
 Eveleigh House  
 Grove Street  
 Bath  
 BA1 5LR  
 United Kingdom

Telephone : +44 (0)1225 475000  
 Email : [tools@iplbath.com](mailto:tools@iplbath.com)  
 Web : [www.iplbath.com](http://www.iplbath.com)

Copyright © IPL 2003. All trademarks acknowledged

